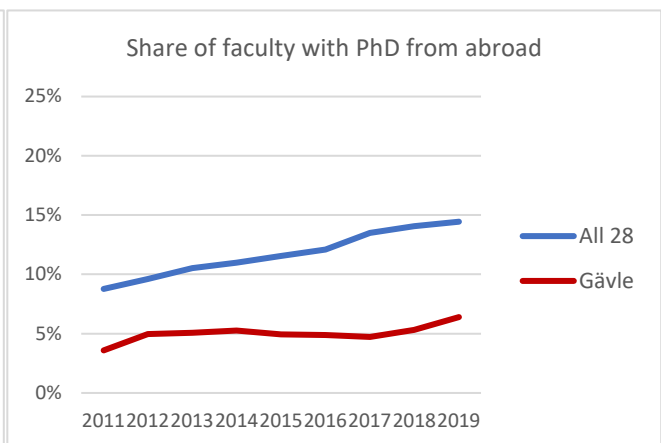
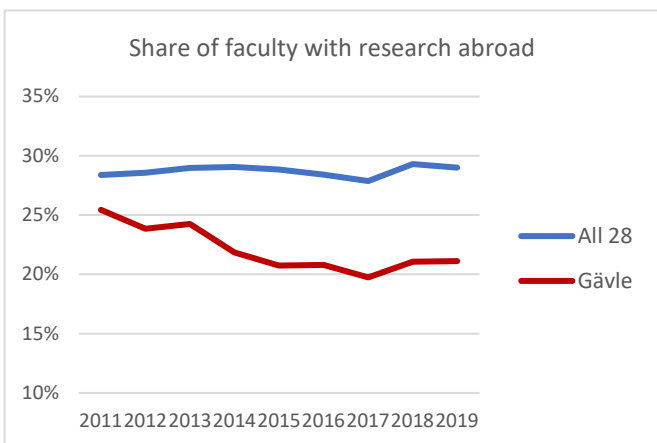
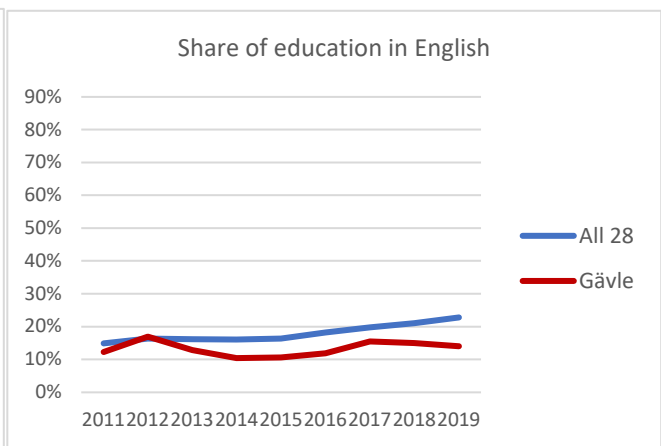
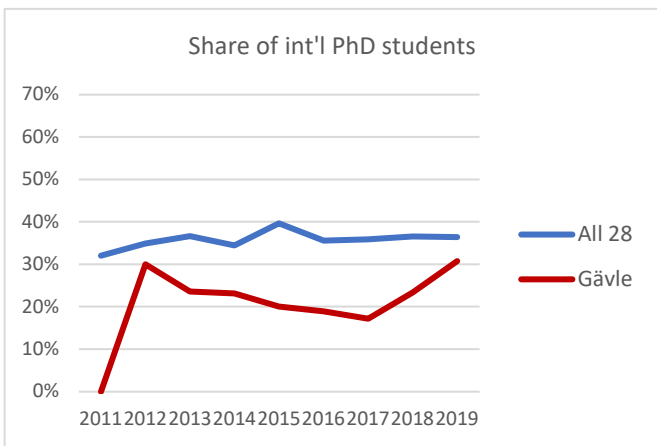
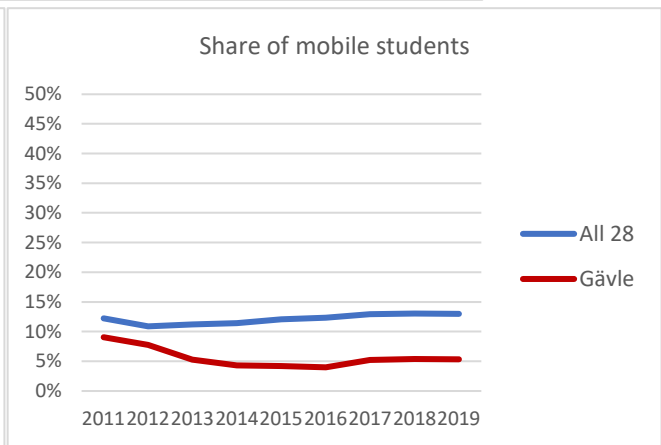
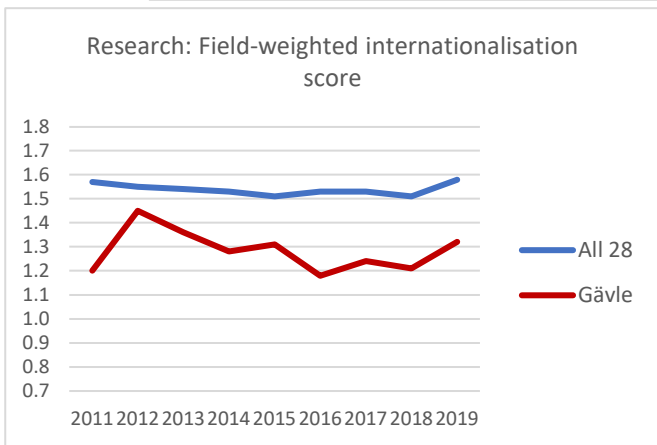
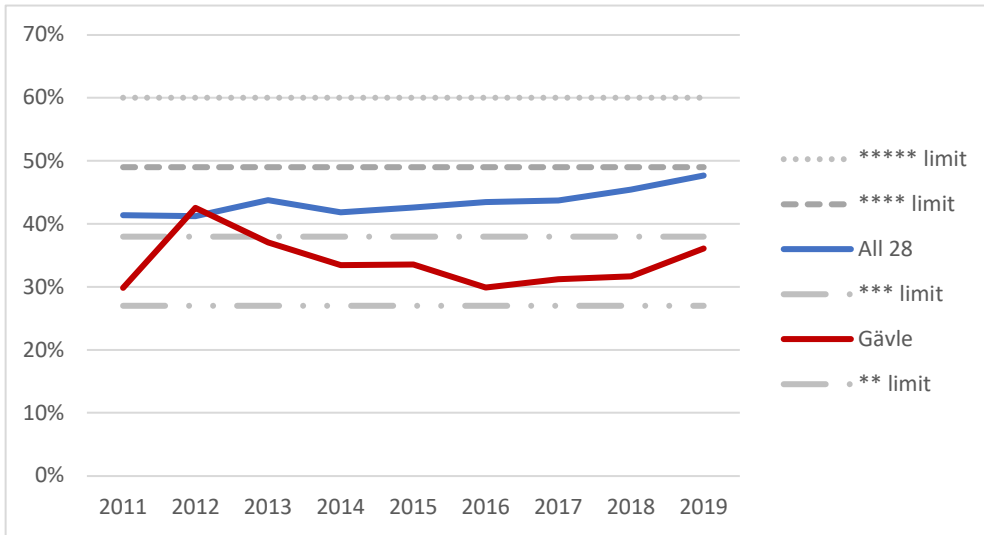


## Overview STINT Internationalisation Index University of Gävle



## Comments to the index

Total index is a weighted sum of all six dimensions:

- 40% Research: International co-publications
- 20% Mobile students
  - 8% Int'l PhD students
- 12% Education in English
- 15% Faculty with int'l academic experiences
  - 5% Leadership with int'l academic experiences

**Research:** The field-weighted internationalisation score compares the share of international co-publications with other publications in the same scientific field, published the same year in the same type of publication. Global average is always 1,00

**Mobile students:** Incoming as well as outgoing. The latter only within exchange programmes. Data from UKÄ

**PhD students:** International PhD students at Swedish HEIs. Data from UKÄ,

**Education in English:** Credits given in English compared to all credits given in programmes and courses. Data from the database behind [universityadmissions.se](http://universityadmissions.se)

**Share of faculty with research abroad:** Should have at least one publication with a foreign affiliation. Data from Elsevier, based on Scopus publications.

**Share of faculty with PhD from abroad:** Data from SCB.

**Leadership with international academic experiences:** Same as for faculty but only for the vice chancellor and the pro-vice chancellor(s). Data is not presented in this overview.

There is a more detailed description at <https://www.stint.se/en/stint-internationalisation-index-method/>